

## Pink® Partition 168

### High density acoustic underlay

#### Product description and typical applications

Pink® Partition 168 insulation (168 kg/m<sup>3</sup>) is ideal for the control of room to room sound transmission in offices, classrooms, medical rooms, apartments or homes. It provides a barrier against unwanted sound. It is a heavy density glasswool panel that significantly reduces sound transmission when used in timber or steel stud walls. Pink® Partition 168 insulation is typically fixed to partition studs under the plasterboard and thus acts as an isolating medium. Pink® Partition 168 insulation can also be used in concrete floor systems and framed ceilings to create a barrier to sound transmission between floors.

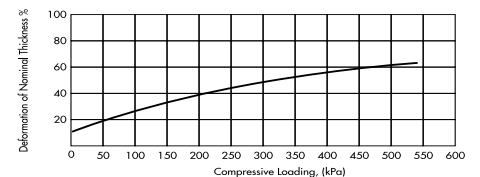
Pink® Partition 168 insulation can be used to reduce noise between upper and lower floors. It can significantly reduce the transmission of impact sound when installed between the floor membrane and the concrete floor.

#### Physical characteristics

Nominal thickness mm	Product code	Batt size mm	Pieces per pack	Area per pack m <sup>2</sup>
13	903668	1200 x 914	10	11.0

#### Compressive strength

Pink® Partition 168 insulation has excellent compressive strength and recovers to its nominal thickness even after prolonged compression. Deformation under compression loading is shown in the graph

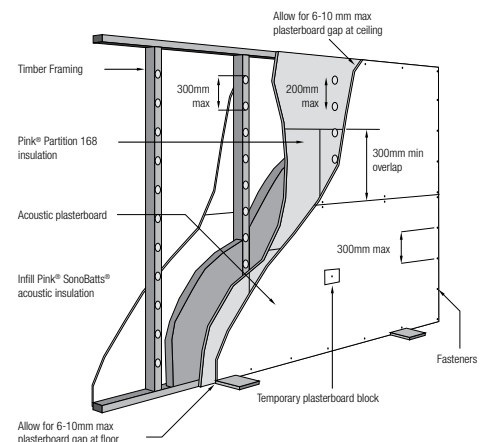


#### Green Star compliant

Fletcher Insulation® is committed to providing environmentally sustainable products. Fletcher Insulation® products have Zero Ozone Depleting Potential in both manufacture and composition, complying with the GreenStar Insulant ODP Emissions credit requirement. Air Quality is maintained with Total Volatile Organic Compounds (VOC) emissions below quantifiable levels.

#### Installation

Pink® Partition 168 insulation is fixed to studs with stud adhesive only, at 200mm centres vertically, with no gaps at board joints or floor/wall/ceiling junctions. Temporarily fasten with single screw until acoustic plasterboard is installed. Conventionally fasten plasterboard horizontally using combination of adhesive and mechanical fasteners. Apply stud adhesive to Pink® Partition 168 insulation along studs at 200mm max. centres at least 200mm away from screw points and sheet edges. Screw fasten plasterboard along sheet edges and ends at 300mm centres. Butt joints in plasterboard and Pink® Partition 168 insulation must not be aligned. No fasteners required in field of board. Hold in place with temporary plasterboard block fastened to centre stud.



Global-Mark.com.au®



The production of environmentally sustainable FBS-1 Glasswool Bio-Soluble Insulation® utilizes approximately 80% recycled waste glass.



Fletcher Insulation® glasswool products are manufactured from FBS-1 Glasswool Bio-Soluble Insulation®. FBS-1 Glasswool Bio-Soluble Insulation® is not classified as hazardous according to the criteria of the Australian Safety and Compensation Council (formerly NOHSC), Approved Criteria for Classifying Hazardous Substances (NOHSC: 1008) 3rd Edition. Fletcher Insulation® glasswool is classified as safe to use, refer to our MSDS.



Fletcher  
Insulation

We safely deliver extraordinary value to our customers

## AS1530.3 Early fire hazard properties of materials

Pink® Partition 168 insulation exhibit the following characteristics when tested in accordance with AS1530 Part 3.

Ignitability Index	0
Spread of Flame Index	0
Heat Evolved Index	0
Smoke Developed Index	0-1

## Moisture absorption

Tested in an atmosphere of 65% relative humidity at 20°C in accordance with British Standard 2972. The moisture content of Pink® Partition 168 insulation is less than 0.1% by volume.

## Alkalinity

Pink® Partition 168 insulation will not support the corrosion of steel. When test in accordance with British Standard 3958 Pink® Partition 168 insulation products are slightly alkaline, pH9 (neutral is pH7).

## Maximum service temperature

Pink® Partition 168 insulation has a maximum service temperature of 340°C.

## Specification notes

State the following:

- Product name and facing density - Pink® Partition 168 insulation
- Application: Install to one side of partition wall
- Specific locations: e.g. all internal framing studs
- Fixing method: Panel or stud adhesive.



Global-Mark.com.au®



The production of environmentally sustainable FBS-1 Glasswool Bio-Soluble Insulation® utilizes approximately 80% recycled waste glass.



Fletcher Insulation® glasswool products are manufactured from FBS-1 Glasswool Bio-Soluble Insulation®. FBS-1 Glasswool Bio-Soluble Insulation® is not classified as hazardous according to the criteria of the Australian Safety and Compensation Council (formerly NOHSC), Approved Criteria for Classifying Hazardous Substances (NOHSC: 1008) 3rd Edition. Fletcher Insulation® glasswool is classified as safe to use, refer to our MSDS.



Fletcher  
Insulation®

The colour PINK and Pink® are registered trademarks of Owens Corning used under licence by Fletcher Insulation.

© Fletcher Insulation Pty Limited 2013. Fletcher Insulation reserves the right to change product specifications without prior notification. Information in this publication and otherwise supplied to users as to the subject product is based on our general experience and is given in good faith, but because of the many particular factors which are outside our knowledge and control and affect the use of products, no warranty is given or is to be implied with respect to either such information or the product itself, in particular the suitability of the product for any particular purpose. The purchaser should independently determine the suitability of the product for the intended application. Unless otherwise stated all ™ and ® are trademarks and registered trademarks of Fletcher Insulation Pty Limited ABN 72 001 175 355.